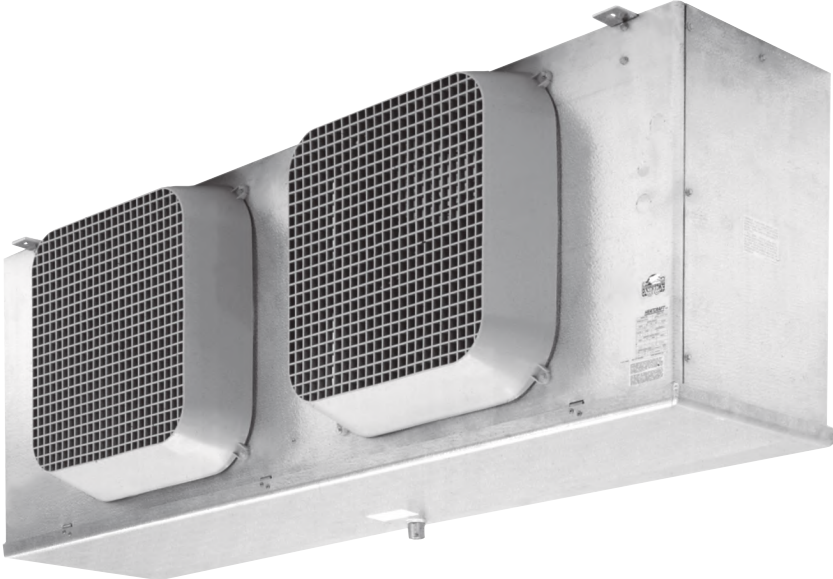
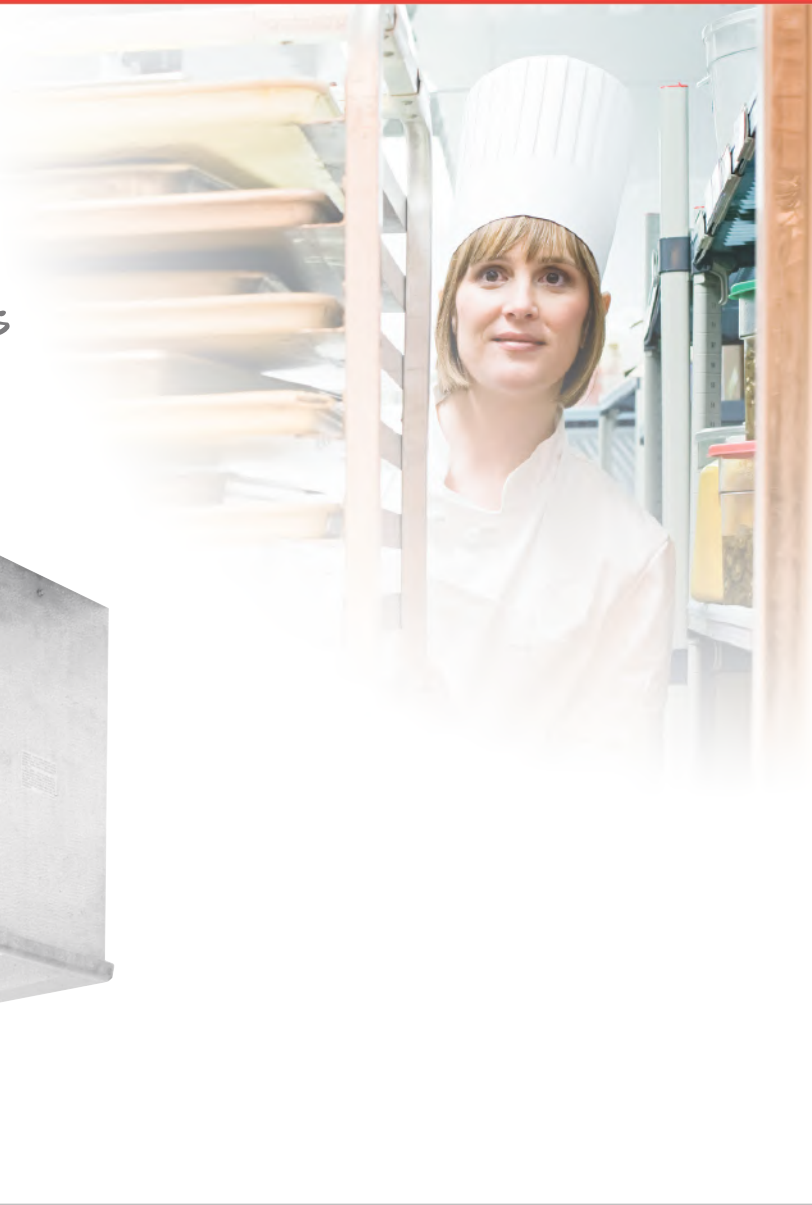




# Medium Profile Unit Coolers

Technical Guide

Models MMT | MLT | MLG



# Table of Contents

Nomenclature.....	2
Features & Benefits .....	3
Performance Data & Specifications	
Air Defrost .....	4-5
Electric Defrost.....	6-7
Hot Gas Defrost .....	8-9
Physical Data .....	10-11
Dimensional Data .....	12
Hot Gas Reverse Cycle Kits.....	13-14
3-Pipe Hot Gas Defrost .....	15
Replacement Parts by InterLink™ .....	16
Standard Nozzle Selection.....	17



## Choose the most energy-efficient motor available for evaporators.



The EC motor is an energy sufficient option on Larkin Medium Profile evaporators. Available on all new equipment or as an easy-to-install, drop-in replacement aftermarket part from InterLink™ Commercial Refrigeration Parts. Because they are a drop-in replacement for existing shaded pole and PSC motors, installation is quick and easy. It's a high impact, quick payback solution for reducing costs and achieving green initiatives without replacing the entire system.

EC motors by InterLink are up to 75% energy efficient - that's a 51-59% increase over shaded pole motors and a 30-35% increase over permanent-split capacitor (PSC) motors. With all of this added efficiency, you can count on more energy savings and lower operational costs while taking a step in the right direction toward conserving our planet's resources.

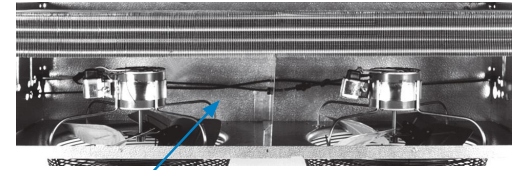
## Nomenclature

M	MT6	130	B	G	A
Model Series	Model Type	Capacity	Electrical Code	Control Option	Design Revision
Larkin Medium Profile Unit Cooler	MT6 = Air defrost, 6 FPI	#BTUH x 100	A = 115/1/60	G = IntelliGen™	
	LT6 = Electric defrost, 6 FPI		B = 208-230/1/60		
	LT4 = Electric defrost, 4 FPI		C = 208-230/3/60		
	LG6 = Hot gas defrost, 6 FPI		D = 460/3/60		
	LG4 = Hot gas defrost, 4 FPI		M = 460/1/60		
			E = 575/3/60		
			L = 575/1/60		
			N = 110/1/50		
			Q = 220/1/50		
			R = 380/1/50		
			V = 380/3/50		
			AE = 115/1/60 (EC)		
			BE = 208-230/1/60 (EC)		
			CE = 208-230/3/60 (EC)		

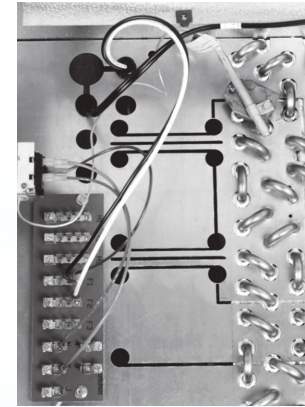
# Features & Benefits

## Cabinet

- Schrader valve provided for suction pressure measurement
- External equalizer connection
- Heavy-gauge textured aluminum cabinet
- All electrical components factory wired to terminal board and identified, making it easy to field wire the unit
- Sweat connections to reduce potential for leaks
- Internal panels are isolated for quiet operation
- Liquid line solenoid wire harness is factory-installed for quick installation



Factory-installed liquid line solenoid wiring harness for faster installation



Innovative Thermo-Flex™ coil

## Motors

- Motors plug into wiring harness for easier servicing
- Single phase EC motors available factory-installed or as a drop-in replacement through InterLink™ Commercial Refrigeration Parts in 115 and 208-230 voltages
- Thermally protected, lifetime-lubricated single phase PSC motors

## Controls Options

- intelliGen™ Refrigeration Controller (iRC) units come with factory mounted, tested and calibrated with an electronic expansion valve, pressure transducer, temperature sensors, control board and User Interface. Standard features include Door Sensor, Product Load Input and Alarm Output.
- Optional Field installable intelliGen Webserver Card (iWC) enables local and remote monitoring on any Phone, Tablet or PC.
- Optional Field installable intelliGen Integration Card (iIC) enables connectivity to BACnet and Modbus.
- Quick Response Controller units come factory mounted with an electronic expansion valve, pressure transducer, temperature sensors and control board.
- Beacon II™ units come factory mounted with an electronic expansion valve, pressure transducer, temperature sensors and control board.

## Coil

- Patented Thermo-Flex™ coil design allows the coil to “flex” during periods of defrost resulting in expansion of the coil surface. By eliminating the possibility of wear at critical stress areas, the integrity and longevity of the unit are dramatically increased (Patent Number 5,584,340)
- Coil heater slots have been enlarged for easier installation and replacement
- Electric defrost models have fixed defrost termination / fan delay and heater limit thermostats
- Reliable nickel steel alloy defrost heater elements
- Heaters are coil face mounted for easy access

## Drain Pan

- Front hinged drain pan for easy access
- Large diameter drain fitting (3/4” ID)

## Other Options

- Totally enclosed single phase PSC motors available as an option for 208-230 and 460 voltages
- Factory installed mounted components are available in these configurations:
  - Pre-assembled units come with mounted TXV, liquid line solenoid valve and room thermostat
  - Pre-charged units come with mounted TXV, liquid line solenoid valve, room thermostat, and quick connect fittings
  - Mounted TXV
  - Mounted TXV and solenoid valve
  - Mounted room thermostat
- Most models available with glycol circuiting (see glycol product brochure)
- Units available with stainless steel housing and drain pan
- Units available with Bronze-Glow coil coating (air, electric and hot gas)
- Units available with copper fins (6 FPI models only)
- Air defrost units available with polyester coated fins, or various coil coating options
- Units available with insulated drain pan
- Ship-loose air sock collar available

**Bohn offers a five-year limited guarantee against leaks at tube sheets and center supports for all medium profile unit coolers**

# PERFORMANCE DATA: AIR DEFROST

## Model MMT Air Defrost | 60 Hz

Model	Capacity				Fan Data			Air Throw* †					
	R-404A		R-407A/C/F, R-448A/R-449A		No.	CFM	m³H	Diameter		Extended (Std.)		Diffused (Opt.)	
	10°F TD 25°F SST	6°C TD 4°C SST	10°F TD 25°F SST	6°C TD 4°C SST				in.	mm	ft.	m	ft.	m
	BTUH	Watts	BTUH	Watts									
MMT6130	13,000	3,800	15,000	4,400	1	2,300	3,910	18	457	65	20	50	15
MMT6155	15,500	4,500	18,000	5,300	1	2,200	3,740	18	457	65	20	50	15
MMT6245	24,500	7,200	27,500	8,100	2	4,600	7,820	18	457	65	20	50	15
MMT6300	30,000	8,800	34,000	10,000	2	4,400	7,480	18	457	65	20	50	15
MMT6365	36,500	10,700	41,500	12,200	3	6,900	11,730	18	457	65	20	50	15
MMT6450	45,000	13,200	51,500	15,100	3	6,600	11,220	18	457	65	20	50	15
MMT6510	51,000	14,900	58,000	17,000	4	9,200	15,640	18	457	65	20	50	15
MMT6600	60,000	17,600	68,500	20,100	4	8,800	14,960	18	457	65	20	50	15
MMT6710	71,000	20,800	81,000	23,700	5	10,500	17,850	18	457	65	20	50	15

## Model MMT Air Defrost | 50 Hz †

Model	Capacity				Fan Data			Air Throw* †					
	R-404A		R-407A/C/F, R-448A/R-449A		No.	CFM	m³H	Diameter		Extended (Std.)		Diffused (Opt.)	
	10°F TD 25°F SST	6°C TD 4°C SST	10°F TD 25°F SST	6°C TD 4°C SST				in.	mm	ft.	m	ft.	m
	BTUH	Watts	BTUH	Watts									
MMT6130	12,400	3,600	14,300	4,200	1	2,070	3,520	18	457	60	18.5	45	13.5
MMT6155	14,700	4,300	17,100	5,000	1	1,980	3,370	18	457	60	18.5	45	13.5
MMT6245	23,300	6,800	26,100	7,700	2	4,140	7,040	18	457	60	18.5	45	13.5
MMT6300	28,500	8,400	32,300	9,500	2	3,960	6,730	18	457	60	18.5	45	13.5
MMT6365	34,700	10,200	39,400	11,600	3	6,210	10,560	18	457	60	18.5	45	13.5
MMT6450	42,800	12,500	48,900	14,300	3	5,940	10,100	18	457	60	18.5	45	13.5
MMT6510	48,500	14,200	55,100	16,200	4	8,280	14,080	18	457	60	18.5	45	13.5
MMT6600	57,000	16,700	65,100	19,100	4	7,920	13,460	18	457	60	18.5	45	13.5
MMT6710	67,500	19,800	77,000	22,500	5	9,450	16,070	18	457	60	18.5	45	13.5

\* Standard molded fan guards allow for extended air throw; optional wire guards promote air diffusion

† Air throw data based on 12-ft. high ceilings with no obstructions where velocity drops to 50 FPM

‡ For EC motors, use 60 Hz capacity and airflow values (Units with EC motors operating at 50 Hz will not see a reduction in performance due to the electronic control of the motor)

# SPECIFICATIONS: AIR DEFROST

## Model MMT Air Defrost | 60 Hz

Model	HP*	PSC								EC Motor			
		115/1/60		208-230/1/60		460/1/60		575/1/60		115/1/60		208-230/1/60	
		Amps	Watts	Amps	Watts	Amps	Watts	Amps	Watts	Amps	Watts	Amps	Watts
MMT6130	1/4	4.0	300	1.8	215	1.0	305	0.7	310	2.8	210	1.4	205
MMT6155	1/4	4.0	300	1.8	215	1.0	305	0.7	310	2.8	210	1.4	205
MMT6245	1/4	8.0	600	3.6	430	2.0	610	1.4	620	5.6	420	2.8	410
MMT6300	1/4	8.0	600	3.6	430	2.0	610	1.4	620	5.6	420	2.8	410
MMT6365	1/4	12.0	900	5.4	645	3.0	915	2.1	930	8.4	630	4.2	615
MMT6450	1/4	12.0	900	5.4	645	3.0	915	2.1	930	8.4	630	4.2	615
MMT6510	1/4	16.0	1,200	7.2	860	4.0	1,220	2.8	1,240	11.2	840	5.6	820
MMT6600	1/4	16.0	1,200	7.2	860	4.0	1,220	2.8	1,240	11.2	840	5.6	820
MMT6710	1/4	-	1,500	9.0	1,075	5.0	1,525	3.5	1,550	14.0	1,050	7.0	1,025

## Model MMT Air Defrost | 50 Hz

Model	HP	PSC Motor			EC Motor	
		110/1/50	220/1/50	380/1/50	110/1/50	220/1/50
		Amps	Amps	Amps	Amps	Amps
MMT6130	1/4	4.0	1.8	1.0	2.8	1.4
MMT6155	1/4	4.0	1.8	1.0	2.8	1.4
MMT6245	1/4	8.0	3.6	2.0	5.6	2.8
MMT6300	1/4	8.0	3.6	2.0	5.6	2.8
MMT6365	1/4	12.0	5.4	3.0	8.4	4.2
MMT6450	1/4	12.0	5.4	3.0	8.4	4.2
MMT6510	1/4	16.0	7.2	4.0	11.2	5.6
MMT6600	1/4	16.0	7.2	4.0	11.2	5.6
MMT6710	1/4	-	9.0	5.0	14.0	7.0

\* 575/1/60 motors are 1/3 HP

# PERFORMANCE DATA : ELECTRIC DEFROST

## Model MLT Electric Defrost | 60 Hz

Model	Capacity				Fan Data			Air Throw* †						
	R-404A		R-407A/C/F, R-448A/R-449A		No.	CFM	m³H	Diameter		Extended (Std.)		Diffused (Opt.)		
	10°F TD -20°F SST	6°C TD -29°C SST	10°F TD -20°F SST	6°C TD -29°C SST				in.	mm	ft.	m	ft.	m	
	BTUH	Watts	BTUH	Watts										
6 Fins Per Inch	MLT6101	10,100	3,000	11,200	3,300	1	2,350	4,000	18	457	65	20	50	15
	MLT6140	14,000	4,100	15,500	4,500	1	2,250	3,830	18	457	65	20	50	15
	MLT6190	19,000	5,600	20,500	6,000	2	4,700	7,990	18	457	65	20	50	15
	MLT6260	26,000	7,600	28,500	8,400	2	4,500	7,650	18	457	65	20	50	15
	MLT6310	31,000	9,100	34,000	10,000	3	7,050	11,990	18	457	65	20	50	15
	MLT6390	39,000	11,400	43,000	12,600	3	6,750	11,480	18	457	65	20	50	15
	MLT6430	43,000	12,600	46,500	13,600	4	8,800	14,960	18	457	65	20	50	15
	MLT6520	52,000	15,200	57,000	16,700	4	8,400	14,280	18	457	65	20	50	15
	MLT6620	62,000	18,200	68,000	19,900	5	10,000	17,000	18	457	65	20	50	15
4 Fins Per Inch	MLT4100	10,000	2,900	11,000	3,200	1	2,325	3,950	18	457	65	20	50	15
	MLT4165	16,500	4,800	18,000	5,300	2	4,900	8,330	18	457	65	20	50	15
	MLT4220	22,000	6,400	24,000	7,000	2	4,650	7,910	18	457	65	20	50	15
	MLT4250	25,000	7,300	27,000	7,900	3	7,350	12,500	18	457	65	20	50	15
	MLT4330	33,000	9,700	36,500	10,700	3	6,975	11,860	18	457	65	20	50	15
	MLT4370	37,000	10,800	40,000	11,700	4	9,100	15,470	18	457	65	20	50	15
	MLT4440	44,000	12,900	48,500	14,200	4	8,700	14,790	18	457	65	20	50	15
	MLT4530	53,000	15,500	58,500	17,100	5	10,350	17,600	18	457	65	20	50	15

## Model MLT Electric Defrost | 50 Hz †

Model	Capacity				Fan Data			Air Throw* †						
	R-404A		R-407A/C/F, R-448A/R-449A		No.	CFM	m³H	Diameter		Extended (Std.)		Diffused (Opt.)		
	10°F TD -20°F SST	6°C TD -29°C SST	10°F TD -20°F SST	6°C TD -29°C SST				in.	mm	ft.	m	ft.	m	
	BTUH	Watts	BTUH	Watts										
6 Fins Per Inch	MLT6101	9,600	2,900	10,600	3,100	1	2,115	3,600	18	457	60	18.5	45	13.5
	MLT6140	13,300	3,900	14,700	4,300	1	2,025	3,440	18	457	60	18.5	45	13.5
	MLT6190	18,050	5,300	19,500	5,700	2	4,230	7,190	18	457	60	18.5	45	13.5
	MLT6260	24,700	7,200	27,100	8,000	2	4,050	6,890	18	457	60	18.5	45	13.5
	MLT6310	29,450	8,600	32,300	9,500	3	6,345	10,790	18	457	60	18.5	45	13.5
	MLT6390	37,050	10,800	40,900	12,000	3	6,075	10,330	18	457	60	18.5	45	13.5
	MLT6430	40,850	12,000	44,200	12,900	4	7,920	13,460	18	457	60	18.5	45	13.5
	MLT6520	49,400	14,400	54,200	15,900	4	7,560	12,850	18	457	60	18.5	45	13.5
	MLT6620	58,900	17,300	64,600	18,900	5	9,000	15,300	18	457	60	18.5	45	13.5
4 Fins Per Inch	MLT4100	9,500	2,800	10,500	3,000	1	2,093	3,560	18	457	60	18.5	45	13.5
	MLT4165	15,675	4,600	17,100	5,000	2	4,410	7,500	18	457	60	18.5	45	13.5
	MLT4220	20,900	6,100	22,800	6,700	2	4,185	7,120	18	457	60	18.5	45	13.5
	MLT4250	23,750	6,900	25,700	7,500	3	6,615	11,250	18	457	60	18.5	45	13.5
	MLT4330	31,350	9,200	34,700	10,200	3	6,278	10,670	18	457	60	18.5	45	13.5
	MLT4370	35,150	10,300	38,000	11,100	4	8,190	13,920	18	457	60	18.5	45	13.5
	MLT4440	41,800	12,300	46,100	13,500	4	7,830	13,310	18	457	60	18.5	45	13.5
	MLT4530	50,350	14,700	55,600	16,200	5	9,315	15,840	18	457	60	18.5	45	13.5

### Capacity Correction Factors For Electric and Hot Gas Defrost Units

Saturated Suction Temp. °F	+20	-10	-20	-30	-40
Saturated Suction Temp. °C	-7	-23	-29	-34	-40
Multiply Capacity By	1.15	1.02	1.00	0.90	0.80

\* Standard molded fan guards allow for extended air throw; optional wire guards promote air diffusion

† Air throw data based on 12-ft. high ceilings with no obstructions where velocity drops to 50 FPM

‡ For EC motors, use 60 Hz capacity and airflow values (Units with EC motors operating at 50 Hz will not see a reduction in performance due to the electronic control of the motor)

# SPECIFICATIONS: ELECTRIC DEFROST

## Model MLT Electric Defrost | 60 Hz

Model	HP	PSC Motor						EC Motor		Defrost Heater						
		208-230/1/60		460/1/60		575/1/60		208-230/1/60		Watts	208-230/1/60	208-230/3/60	460/1/60	460/3/60	575/3/60	
		Amps	Watts	Amps	Watts	Amps	Watts	Amps	Watts		Total Amps					
6 Fins Per Inch	MLT6101	1/4	1.8	305	1.0	305	0.7	310	1.4	215	2,730	11.9	8.2	5.9	4.1	3.3
	MLT6140	1/4	1.8	305	1.0	305	0.7	310	1.4	215	2,730	11.9	8.2	5.9	4.1	3.3
	MLT6190	1/4	3.6	610	2.0	610	1.4	620	2.8	430	5,350	23.3	16.0	11.6	8.3	6.6
	MLT6260	1/4	3.6	610	2.0	610	1.4	620	2.8	430	5,350	23.3	16.0	11.6	8.3	6.6
	MLT6310	1/4	5.4	915	3.0	915	2.1	930	4.2	645	7,750	33.7	23.2	16.8	12.0	9.6
	MLT6390	1/4	5.4	915	3.0	915	2.1	930	4.2	645	7,750	33.7	23.2	16.8	12.0	9.6
	MLT6430	1/4	7.2	1,220	4.0	1,220	2.8	1,240	5.6	860	10,200	-	30.5	22.2	15.8	12.6
	MLT6520	1/4	7.2	1,220	4.0	1,220	2.8	1,240	5.6	860	10,200	-	30.5	22.2	15.8	12.6
	MLT6620	1/4	9.0	1,525	5.0	1,525	3.5	1,550	7.0	1,075	11,600	-	34.7	25.2	18.1	14.4
4 Fins Per Inch	MLT4100	1/4	1.8	305	1.0	305	0.7	310	1.4	215	2,730	11.9	8.2	5.9	4.1	3.3
	MLT4165	1/4	3.6	610	2.0	610	1.4	620	2.8	430	5,350	23.3	16.0	11.6	8.3	6.6
	MLT4220	1/4	3.6	610	2.0	610	1.4	620	2.8	430	5,350	23.3	16.0	11.6	8.3	6.6
	MLT4250	1/4	5.4	915	3.0	915	2.1	930	4.2	645	7,750	33.7	23.2	16.8	12.0	9.6
	MLT4330	1/4	5.4	915	3.0	915	2.1	930	4.2	645	7,750	33.7	23.2	16.8	12.0	9.6
	MLT4370	1/4	7.2	1,220	4.0	1,220	2.8	1,240	5.6	860	10,200	-	30.5	22.2	15.8	12.6
	MLT4440	1/4	7.2	1,220	4.0	1,220	2.8	1,240	5.6	860	10,200	-	30.5	22.2	15.8	12.6
	MLT4530	1/4	9.0	1,525	5.0	1,525	3.5	1,550	7.0	1,075	11,600	-	34.7	25.2	18.1	14.4

## Model MLT Electric Defrost | 50 Hz

Model	HP	PSC Motor		EC Motor	Watts	Defrost Heater		
		220/1/50	380/1/50	220/1/50		220/1/50	380/3/50	
		Amps	Amps	Amps		Total Amps		
6 Fins Per Inch	MLT6101	1/4	1.8	1.0	1.4	2,510	11.4	3.4
	MLT6140	1/4	1.8	1.0	1.4	2,510	11.4	3.4
	MLT6190	1/4	3.6	2.0	2.8	4,910	22.3	6.9
	MLT6260	1/4	3.6	2.0	2.8	4,910	22.3	6.9
	MLT6310	1/4	5.4	3.0	4.2	7,090	32.2	9.9
	MLT6390	1/4	5.4	3.0	4.2	7,090	32.2	9.9
	MLT6430	1/4	7.2	4.0	5.6	9,340	-	13.1
	MLT6520	1/4	7.2	4.0	5.6	9,340	-	13.1
	MLT6620	1/4	9.0	5.0	7.0	10,620	-	15.0
4 Fins Per Inch	MLT4100	1/4	1.8	1.0	1.4	2,510	11.4	3.4
	MLT4165	1/4	3.6	2.0	2.8	4,910	22.3	6.9
	MLT4220	1/4	3.6	2.0	2.8	4,910	22.3	6.9
	MLT4250	1/4	5.4	3.0	4.2	7,090	32.2	9.9
	MLT4330	1/4	5.4	3.0	4.2	7,090	32.2	9.9
	MLT4370	1/4	7.2	4.0	5.6	9,340	-	13.1
	MLT4440	1/4	7.2	4.0	5.6	9,340	-	13.1
	MLT4530	1/4	9.0	5.0	7.0	10,620	-	15.0

\* 575/1/60 motors are 1/3 HP

# PERFORMANCE DATA : HOT GAS DEFROST

## Model MLG Hot Gas Defrost | 60 Hz

Model	Capacity				Fan Data			Air Throw* †						
	R-404A		R-407A/C/F, R-448A/R-449A		No.	CFM	m³H	Diameter		Extended (Std.)		Diffused (Opt.)		
	10°F TD -20°F SST	6°C TD -29°C SST	10°F TD -20°F SST	6°C TD -29°C SST				in.	mm	ft.	m	ft.	m	
	BTUH	Watts	BTUH	Watts										
6 Fins Per Inch	MLG6190	19,000	5,600	20,500	6,000	2	4,700	7,990	18	457	65	20	50	15
	MLG6260	26,000	7,600	28,500	8,400	2	4,500	7,650	18	457	65	20	50	15
	MLG6310	31,000	9,100	34,000	10,000	3	7,050	11,990	18	457	65	20	50	15
	MLG6390	39,000	11,400	43,000	12,600	3	6,750	11,480	18	457	65	20	50	15
	MLG6430	43,000	12,600	46,500	13,600	4	8,800	14,960	18	457	65	20	50	15
	MLG6520	52,000	15,200	57,000	16,700	4	10,000	17,000	18	457	65	20	50	15
4 Fins Per Inch	MLG4165	16,500	4,800	18,000	5,300	2	4,900	8,330	18	457	65	20	50	15
	MLG4220	22,000	6,400	24,000	7,000	2	4,650	7,910	18	457	65	20	50	15
	MLG4250	25,000	7,300	27,000	7,900	3	7,350	12,500	18	457	65	20	50	15
	MLG4330	33,000	9,700	36,500	10,700	3	6,975	11,860	18	457	65	20	50	15
	MLG4370	37,000	10,800	40,000	11,700	4	9,100	15,470	18	457	65	20	50	15
	MLG4440	44,000	12,900	48,500	14,200	4	8,700	14,790	18	457	65	20	50	15

## Model MLG Hot Gas Defrost | 50 Hz †

Model	Capacity				Fan Data			Air Throw* †						
	R-404A		R-407A/C/F, R-448A/R-449A		No.	CFM	m³H	Diameter		Extended (Std.)		Diffused (Opt.)		
	10°F TD -20°F SST	6°C TD -29°C SST	10°F TD -20°F SST	6°C TD -29°C SST				in.	mm	ft.	m	ft.	m	
	BTUH	Watts	BTUH	Watts										
6 Fins Per Inch	MLG6190	19,900	5,800	21,700	6,400	2	4,230	7,190	18	457	60	18.5	45	13.5
	MLG6260	22,600	6,600	24,400	7,100	2	4,050	6,890	18	457	60	18.5	45	13.5
	MLG6310	29,800	8,700	33,000	9,700	3	6,345	10,790	18	457	60	18.5	45	13.5
	MLG6390	33,400	9,800	36,100	10,500	3	6,075	10,330	18	457	60	18.5	45	13.5
	MLG6430	39,700	11,700	43,800	12,800	4	7,920	13,460	18	457	60	18.5	45	13.5
	MLG6520	47,800	14,000	52,800	15,400	4	7,560	12,850	18	457	60	18.5	45	13.5
4 Fins Per Inch	MLG4165	18,100	5,300	19,500	5,700	2	4,410	7,500	18	457	60	18.5	45	13.5
	MLG4220	24,700	7,200	27,100	8,000	2	4,185	7,120	18	457	60	18.5	45	13.5
	MLG4250	29,500	8,600	32,300	9,500	3	6,615	11,250	18	457	60	18.5	45	13.5
	MLG4330	37,100	10,800	40,900	12,000	3	6,278	10,670	18	457	60	18.5	45	13.5
	MLG4370	40,900	12,000	44,200	12,900	4	8,190	13,920	18	457	60	18.5	45	13.5
	MLG4440	49,400	14,400	54,200	15,900	4	7,830	13,310	18	457	60	18.5	45	13.5

### Capacity Correction Factors For Electric and Hot Gas Defrost Units

Saturated Suction Temp. °F	+20	-10	-20	-30	-40
Saturated Suction Temp. °C	-7	-23	-29	-34	-40
Multiply Capacity By	1.15	1.02	1.00	0.90	0.80

\* Standard molded fan guards allow for extended air throw; optional wire guards promote air diffusion

† Air throw data based on 12-ft. high ceilings with no obstructions where velocity drops to 50 FPM

‡ For EC motors, use 60 Hz capacity and airflow values (Units with EC motors operating at 50 Hz will not see a reduction in performance due to the electronic control of the motor)



# SPECIFICATIONS: HOT GAS DEFROST

## Model MLG Hot Gas Defrost | 60 Hz

Model	HP*	PSC Motor								EC Motor				Drain Pan Heater (Std.)					
		115/1/60		208-230/1/60		460/1/60		575/1/60		115/1/60		208-230/1/60		Watts	115/1/60	208/230/1/60	460/1/60	575/1/60	
		Amps	Watts	Amps	Watts	Amps	Watts	Amps	Watts	Amps	Watts	Amps	Watts		Total Amps				
6 Fins Per Inch	MLG6190	1/4	8.0	600	3.6	610	2.0	610	1.4	620	5.6	420	2.8	430	950	8.3	4.1	2.1	1.7
	MLG6260	1/4	8.0	600	3.6	610	2.0	610	1.4	620	5.6	420	2.8	430	950	8.3	4.1	2.1	1.7
	MLG6310	1/4	12.0	900	5.4	915	3.0	915	2.1	930	8.4	630	4.2	645	1,350	11.7	5.9	2.9	2.3
	MLG6390	1/4	12.0	900	5.4	915	3.0	915	2.1	930	8.4	630	4.2	645	1,350	11.7	5.9	2.9	2.3
	MLG6430	1/4	16.0	1,200	7.2	1,220	4.0	1,220	2.8	1,240	11.2	840	5.6	860	1,800	15.7	7.8	3.9	3.1
	MLG6520	1/4	16.0	1,200	7.2	1,220	4.0	1,220	2.8	1,240	11.2	840	5.6	860	1,800	15.7	7.8	3.9	3.1
4 Fins Per Inch	MLG4165	1/4	8.0	600	3.6	610	2.0	610	1.4	620	5.6	420	2.8	430	950	8.3	4.1	2.1	1.7
	MLG4220	1/4	8.0	600	3.6	610	2.0	610	1.4	620	5.6	420	2.8	430	950	8.3	4.1	2.1	1.7
	MLG4250	1/4	12.0	900	5.4	915	3.0	915	2.1	930	8.4	630	4.2	645	1,350	11.7	5.9	2.9	2.3
	MLG4330	1/4	12.0	900	5.4	915	3.0	915	2.1	930	8.4	630	4.2	645	1,350	11.7	5.9	2.9	2.3
	MLG4370	1/4	16.0	1,200	7.2	1,220	4.0	1,220	2.8	1,240	11.2	840	5.6	860	1,800	15.7	7.8	3.9	3.1
	MLG4440	1/4	16.0	1,200	7.2	1,220	4.0	1,220	2.8	1,240	11.2	840	5.6	860	1,800	15.7	7.8	3.9	3.1

## Model MLG Hot Gas Defrost | 50 Hz

Model	HP	PSC Motor		EC Motor	Drain Pan Heater (Std.)			
		220/1/50	380/1/50	220/1/50	Watts	220/1/50	380/3/50	
		Amps	Amps	Amps		Total Amps		
6 Fins Per Inch	MLG6190	1/4	3.6	2.0	2.8	860	3.9	1.7
	MLG6260	1/4	3.6	2.0	2.8	860	3.9	1.7
	MLG6310	1/4	5.4	3.0	4.2	1,230	5.6	2.4
	MLG6390	1/4	5.4	3.0	4.2	1,230	5.6	2.4
	MLG6430	1/4	7.2	4.0	5.6	1,650	7.5	3.2
	MLG6520	1/4	7.2	4.0	5.6	1,650	7.5	3.2
4 Fins Per Inch	MLG4165	1/4	3.6	2.0	2.8	860	3.9	1.7
	MLG4220	1/4	3.6	2.0	2.8	860	3.9	1.7
	MLG4250	1/4	5.4	3.0	4.2	1,230	5.6	2.4
	MLG4330	1/4	5.4	3.0	4.2	1,230	5.6	2.4
	MLG4370	1/4	7.2	4.0	5.6	1,650	7.5	3.2
	MLG4440	1/4	7.2	4.0	5.6	1,650	7.5	3.2

\* 575/1/60 motors are 1/3 HP

## Model MMT Air Defrost

Model	No. of Fans	Connections (in.)				Approx. Net Wt.	
		Coil Inlet ODF	Suction ODF	External Equalizer ODF	Drain FPT	lbs.	kg
MMT6130	1	1/2	7/8	1/4	3/4	115	52
MMT6155	1	1/2	1-1/8	1/4	3/4	123	56
MMT6245	2	7/8	1-1/8	1/4	3/4	134	61
MMT6300	2	7/8	1-1/8	1/4	3/4	148	67
MMT6365	3	7/8	1-3/8	1/4	3/4	200	91
MMT6450	3	1-1/8*	1-3/8	1/4	3/4	227	103
MMT6510	4	1-1/8*	1-5/8	1/4	3/4	230	104
MMT6600	4	1-1/8*	1-5/8	1/4	3/4	255	116
MMT6710	5	1-1/8*	1-5/8	1/4	3/4	285	129

## Model MLT Electric Defrost

Model	No. of Fans	Connections (in.)				Approx. Net Wt.		
		Coil Inlet ODF	Suction ODF	External Equalizer ODF	Drain FPT	lbs.	kg	
6 Fins Per Inch	MLT6101	1	1/2	7/8	1/4	3/4	118	54
	MLT6140	1	1/2	7/8	1/4	3/4	126	57
	MLT6190	2	7/8	1-1/8	1/4	3/4	138	63
	MLT6260	2	1-1/8*	1-3/8	1/4	3/4	153	69
	MLT6310	3	1-1/8*	1-3/8	1/4	3/4	210	95
	MLT6390	3	1-1/8*	1-3/8	1/4	3/4	237	108
	MLT6430	4	1-1/8*	1-5/8	1/4	3/4	267	121
	MLT6520	4	1-1/8*	1-5/8	1/4	3/4	300	136
	MLT6620	5	1-1/8*	1-5/8	1/4	3/4	338	153
4 Fins Per Inch	MLT4100	1	1/2	7/8	1/4	3/4	125	56
	MLT4165	2	7/8	1-1/8	1/4	3/4	136	62
	MLT4220	2	1-1/8*	1-3/8	1/4	3/4	151	68
	MLT4250	3	1-1/8*	1-3/8	1/4	3/4	207	94
	MLT4330	3	1-1/8*	1-3/8	1/4	3/4	234	106
	MLT4370	4	1-1/8*	1-5/8	1/4	3/4	262	119
	MLT4440	4	1-1/8*	1-5/8	1/4	3/4	295	134
	MLT4530	5	1-1/8*	1-5/8	1/4	3/4	332	151

\* Supplied with adapter to 7/8 ODF

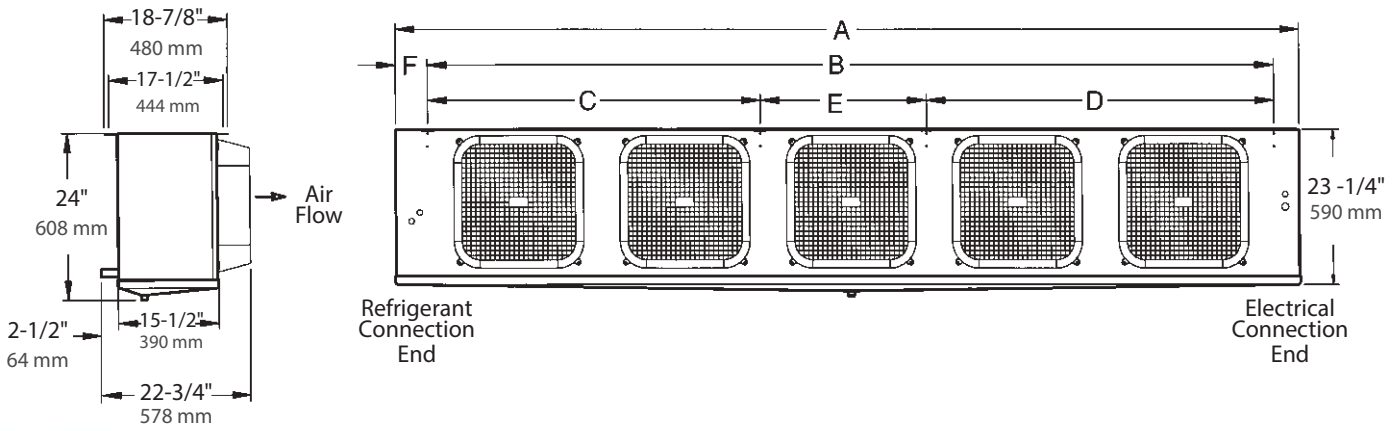
## Model MLG Hot Gas Defrost

Model	No. of Fans	Connections (in.)						Approx. Net Wt.		
		Coil Inlet ODF	Suction ODF	External Equalizer ODF	Drain FPT	Side Port ODF	Hot Gas Pan Conns.** ODF	lbs.	kg	
6 Fins Per Inch	MLG6190	2	1-1/8*	1-1/8	1/4	3/4	5/8	7/8	175	79
	MLG6260	2	1-1/8*	1-3/8	1/4	3/4	5/8	7/8	190	86
	MLG6310	3	1-1/8*	1-3/8	1/4	3/4	5/8	7/8	210	95
	MLG6390	3	1-1/8*	1-3/8	1/4	3/4	5/8	7/8	237	108
	MLG6430	4	1-1/8*	1-5/8	1/4	3/4	5/8	7/8	267	121
	MLG6520	4	1-1/8*	1-5/8	1/4	3/4	5/8	7/8	300	136
4 Fins Per Inch	MLG4165	2	1-1/8*	1-1/8	1/4	3/4	5/8	7/8	173	78
	MLG4220	2	1-1/8*	1-3/8	1/4	3/4	5/8	7/8	188	85
	MLG4250	3	1-1/8*	1-3/8	1/4	3/4	5/8	7/8	207	94
	MLG4330	3	1-1/8*	1-3/8	1/4	3/4	5/8	7/8	234	106
	MLG4370	4	1-1/8*	1-5/8	1/4	3/4	5/8	7/8	262	119
	MLG4440	4	1-1/8*	1-5/8	1/4	3/4	5/8	7/8	295	134

\* Supplied with adapter to 7/8 ODF

\*\* Supplied with electric drain pan heater as standard, hot gas pan is optional

# DIMENSIONAL DATA



## Dimensional Data For All Models

Model	6 FPI Models		4 FPI Models		Dimensions											
	Defrosts		Defrosts		A		B		C		D		E		F	
	Elec.	Hot Gas	Elec.	Hot Gas	in.	mm	in.	mm	in.	mm	in.	mm	in.	mm	in.	mm
MMT6130	MLT6101	-	-	-	39-5/16	1,051	30-1/4	770	-	-	-	-	-	-	5-7/16	138
MMT6155	MLT6140	-	MLT4100	-	39-5/16	1,051	30-1/4	770	-	-	-	-	-	-	5-7/16	138
MMT6245	MLT6190	MLG6190	MLT4165	MLG4165	67-5/16	1,761	58-1/4	1,480	-	-	-	-	-	-	5-7/16	138
MMT6300	MLT6260	MLG6260	MLT4220	MLG4220	67-5/16	1,761	58-1/4	1,480	-	-	-	-	-	-	5-7/16	138
MMT6365	MLT6310	MLG6310	MLT4250	MLG4250	95-5/16	2,471	86-1/4	2,190	-	-	-	-	-	-	5-7/16	138
MMT6450	MLT6390	MLG6390	MLT4330	MLG4330	95-5/16	2,471	86-1/4	2,190	-	-	-	-	-	-	5-7/16	138
MMT6510	MLT6430	MLG6430	MLT4370	MLG4370	123-5/16	3,181	114-1/4	2,900	56	1,420	58-1/4	1,480	-	-	5-7/16	138
MMT6600	MLT6520	MLG6520	MLT4440	MLG4440	123-5/16	3,181	114-1/4	2,900	56	1,420	58-1/4	1,480	-	-	5-7/16	138
MMT6710	MLT6620	-	MLT4530	-	136-13/16	3,530	129-3/4	3,300	51	1,300	53-1/4	1,350	25-1/2	650	4-15/16	125

Right source. Right parts. Right now.

InterLink™ is your link to a complete line of dependable and certified commercial refrigeration parts, accessories and innovative electronic controls for all Larkin equipment. At InterLink, we provide our wholesalers with a comprehensive selection of product solutions and innovative technologies for the installed customer base. And every product is built to ensure the same high performance standards with which all Heatcraft Refrigeration Products (HRP) brands are built — backed by a dedicated team to serve every customer need, delivering at the best lead times in the industry.

Dependable. Versatile. Courteous.

Finally, one simple source for all your replacement needs from a name you can trust.

For parts, please contact (800) 686-7278 or visit [www.heatcraftprd.com](http://www.heatcraftprd.com).

## Motor/Fan Blade/Fan Guards

Part #	Description
5020-S	PSC Motor 115V
5020-T	PSC Motor 208-230V
4567-T	Motor 208-230V PSC Totally Enclosed
25302201	Motor 460V PSC
25304601*	Motor 460V Low Temp PSC Totally Enclosed
25308101*	Motor 208-230V Low Temp PSC Totally Enclosed
25317501	Motor 208-230V EC Totally Enclosed
25317601	Motor 115V EC Totally Enclosed
5599-M	Run Capacitor (5 MFD) - Used with most PSC Motors
5779-G	Run Capacitor (7.5 MFD) - Used with 25304601 Motor Only
22511601	Run Capacitor (7.5 MFD) - Used with 25399301
25399301	Motor 575V Low Temp PSC Totally Enclosed
5064-E	Motor Mount
5130-C	Fan Blade
5054F	Fan Guard Molded
23101802	Fan Guard Blue Wire

\* Special motors to be used in room ambients -31°F to -50°F

## Cabinet Components

Part #	Description	No. of Fans
40491902	Drain Pan*	1
40492102	Drain Pan*	2
40492302	Drain Pan*	3
40492502	Drain Pan*	4
40492702	Drain Pan*	5
40830101	Header Side Panel	1-5
40830201	Electrical Side Panel	1-5
40830901	Header Connection Panel	1-5
92864003	Drain Fitting	1-5

\* Includes provision to mount drain pan heater

## Electrical Components

Part #	Description
2891040	Room Thermostat
2890109	Defrost Term. / Fan Delay Thermostat

**NOTE:** Contact factory for hot gas defrost components not listed

## Drain Pan Defrost Heater (1 per unit)

Part #	Description	Voltage	Color Code
24710301	1 Fan Unit, 530W	208-230V	Black
24710302	2 Fan Unit, 950W	208-230V	Black
24710303	3 Fan Unit, 1350W	208-230V	Black
24710304	4 Fan Unit, 1800W	208-230V	Black
24710305	5 Fan Unit, 2000W	208-230V	Black
24710401	1 Fan Unit, 530W	460V	Red
24710402	2 Fan Unit, 950W	460V	Red
24710403	3 Fan Unit, 1350W	460V	Red
24710404	4 Fan Unit, 1800W	460V	Red
24710405	5 Fan Unit, 2000W	460V	Red
24710502	2 Fan Unit, 950W	115V	Black, White
24710503	3 Fan Unit, 1350W	115V	Black, White
24710504	4 Fan Unit, 1800W	115V	Black, White

\* Includes provision to mount drain pan heater

## Coil Defrost Heater (4 per unit)

Part #	Description	Voltage
24710201	1 Fan Unit, 550W	230-460V
24710202	2 Fan Unit, 1100W	230-460V
24710203	3 Fan Unit, 1600W	230-460V
24710204	4 Fan Unit, 2100W	230-460V
24710205	5 Fan Unit, 2400W	230-460V
23308001	Heater Clip (1-3 fans)	-
23308101	Heater Clip (4-5 fans)	-

# STANDARD NOZZLE SELECTION

## Model MMT Air Defrost

Model	No. of Fans	Distributor Tube (in.)		No. of Circuits	R-404A, R-507A Nozzle	R-407A, R-407F, R-407C Nozzle	R-448A, R-449A Nozzle	R-22 Nozzle (Ref. Only)
		OD	Length					
MMT6130	1	3/16	21-1/2	3	L-1	L-3/4	L-1	L-3/4
MMT6155	1	3/16	21-1/2	5	L-1	L-1	L-1-1/2	L-1
MMT6245	2	3/16	21-1/2	9	G-2	G-2	G-2-1/2	G-1-1/2
MMT6300	2	3/16	21-1/2	9	G-2	G-2	G-2-1/2	G-2
MMT636	3	3/16	21-1/2	9	G-2-1/2	G-2-1/2	G-3	G-2
MMT6450	3	3/16	21-1/2	12	E-3	E-3	E-4	E-2-1/2
MMT6510	4	3/16	21-1/2	13	E-4	E-4	E-5	E-2-1/2
MMT6600	4	3/16	21-1/2	18	E-4	E-4	E-6	E-3
MMT6710	5	3/16	21-1/2	18	E-5	E-5	E-6	E-4

## Model MLT Electric Defrost

Model	No. of Fans	Distributor Tube (in.)		No. of Circuits	R-404A, R-507A Nozzle	R-407A, R-407F, R-407C Nozzle	R-448A, R-449A Nozzle	R-22 Nozzle (Ref. Only)	
		OD	Length						
6 Fins Per Inch	MLT6101	1	3/16	21-1/2	5	L-1-1/2	L-1	L-1-1/2	L-3/4
	MLT6140	1	3/16	21-1/2	6	L-1-1/2	L-1-1/2	L-2	L-1-1/2
	MLT6190	2	3/16	21-1/2	9	G-2-1/2	G-2	G-2-1/2	G-2
	MLT6260	2	3/16	21-1/2	12	E-3	E-3	E-4	E-2-1/2
	MLT6310	3	3/16	21-1/2	13	E-4	E-4	E-5	E-2-1/2
	MLT6390	3	3/16	21-1/2	18	E-5	E-5	E-6	E-3
	MLT6430	4	3/16	21-1/2	12	E-5	E-5	E-6	E-3
	MLT6520	4	3/16	21-1/2	17	E-6	E-6	E-8	E-4
	MLT6620	5	3/16	21-1/2	17	E-8	E-8	E-10	E-5
4 Fins Per Inch	MLT4100	1	3/16	21-1/2	6	L-1-1/2	L-1	L-1-1/2	L-3/4
	MLT4165	2	3/16	21-1/2	9	G-2	G-2	G-2-1/2	G-1-1/2
	MLT4220	2	3/16	21-1/2	12	E-2-1/2	E-2-1/2	E-4	E-2
	MLT4250	3	3/16	21-1/2	13	E-3	E-3	E-4	E-2-1/2
	MLT4330	3	3/16	21-1/2	18	E-4	E-4	E-5	E-3
	MLT4370	4	3/16	21-1/2	12	E-4	E-4	E-5	E-3
	MLT4440	4	3/16	21-1/2	17	E-5	E-5	E-8	E-4
	MLT4530	5	3/16	21-1/2	17	E-6	E-6	E-8	E-4

**Note:** Nozzles sized for 90-100°F liquid temperature at expansion valve.

Contact Application Engineering for guidance if:

- Liquid temperature is not 90-100°F
- Evaporator TD is not 10°-15°F (room temperature – saturated suction temperature)
- Electric defrost and hot gas models with a saturated suction temperature of 10°F or higher

**Caution:**

Refrigeration system will not perform properly without correct nozzle!

# STANDARD NOZZLE SELECTION

## Model MLG Hot Gas Defrost

Model	No. of Fans	Distributor Tube (in.)		No. of Circuits	R-404A, R-507A Nozzle	R-407A, R-407F, R-407C Nozzle	R-448A, R-449A Nozzle	R-22 Nozzle (Ref. Only)	
		OD	Length						
6 Fins Per Inch	MLG6190	2	3/16	21-1/2	9	E-2-1/2	E-2-1/2	E-3	E-1-1/2
	MLG6260	2	3/16	21-1/2	12	E-4	E-3	E-4	E-2-1/2
	MLG6310	3	3/16	21-1/2	13	E-4	E-4	E-5	E-3
	MLG6390	3	3/16	21-1/2	18	E-5	E-5	E-6	E-4
	MLG6430	4	3/16	21-1/2	12	E-5	E-5	E-6	E-4
	MLG6520	4	3/16	21-1/2	17	E-6	E-6	E-8	E-5
4 Fins Per Inch	MLG4165	2	3/16	21-1/2	9	E-2-1/2	E-2	E-2-1/2	E-1-1/2
	MLG4220	2	3/16	21-1/2	12	E-3	E-3	E-4	E-2-1/2
	MLG4250	3	3/16	21-1/2	13	E-3	E-3	E-4	E-2-1/2
	MLG4330	3	3/16	21-1/2	18	E-4	E-4	E-5	E-3
	MLG4370	4	3/16	21-1/2	12	E-4	E-4	E-5	E-3
	MLG4440	4	3/16	21-1/2	17	E-5	E-5	E-6	E-4

**Note:** Nozzles sized for 90-100°F liquid temperature at expansion valve.

Contact Application Engineering for guidance if:

- Liquid temperature is not 90-100°F
- Evaporator TD is not 10°-15°F (room temperature – saturated suction temperature)
- Electric defrost and hot gas models with a saturated suction temperature of 10°F or higher

**Caution:**

Refrigeration system will not perform properly without correct nozzle!



2175 West Park Place Blvd. · Stone Mountain, GA 30087  
Phone: 800.537.7775 · Fax: 770.465.5900  
[heatcrafterpd.com](http://heatcrafterpd.com)



Since product improvement is a continuing effort, we reserve the right to make changes in specifications without notice.

LK-MPTB-0818 | Version 001