

R-22 Refrigerant Phaseout

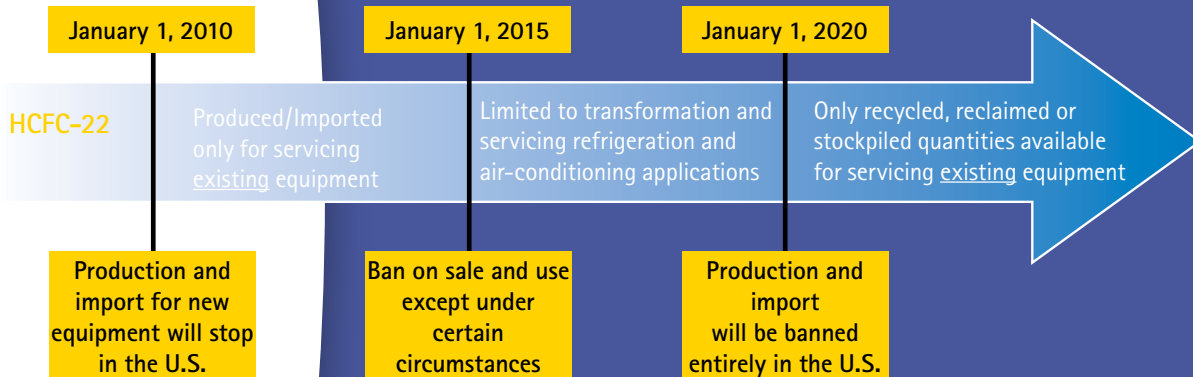
After 2010, chemical manufacturers may still produce R-22 to service existing equipment, but not for use in new equipment. As a result, heating, ventilation, air-conditioning and refrigeration (HVACR) system manufacturers will only be able to use recovered and recycled R-22 in (HVACR) equipment manufactured on or after January 1, 2010.



R-22 Phaseout Details

- R-22 demand is expected to exceed the supply “cap” starting in 2015 if there are low recovery and reusage rates.
- The EPA published that the use of recovered refrigerant will be necessary to avoid R-22 supply shortages.
- Insufficient supplies are expected with current recovery rates of less than 10%.
- A faster transition to alternative refrigeration equipment can help balance R-22 supply and demand in the future.
- Heatcraft Refrigeration Products has chosen HFC’s, R-404A and R-507, as a substitute for its refrigeration systems.

The Accelerated Phaseout



Source: U.S. Environmental Protection Agency

Preparing for the R-22 Phaseout

The phase out of R-22 is fast approaching! The next step down of R-22 production levels is in 2010.

RECOVER and RECYCLE

- Ensure that you are able to service existing R-22 equipment by recovering, recycling and reclaiming existing R-22 refrigerant.

RETROFIT or REPLACE

- Retrofit or replace R-22 systems when possible and choose R-404A/R-507 systems for new installations.

TRAIN PERSONNEL

- Train all personnel on proper refrigerant installation and handling as well as the upcoming phase-out.

FIX LEAKS

- Identify and repair system leaks.

The name behind the brands you trust.™



Heatcraft Refrigeration's Available Products

Heatcraft Refrigeration Products offers a broad range of R-404A and R-507 compatible refrigeration equipment.

Now R-404A can be used in higher suction temperature ranges.

Air-Cooled Condensing Units

Hermetic, Scroll and Semi-Hermetic 1/2 to 80 HP

- 1/2 to 5 HP Hermetic rated to 40° F SST - **NEW!**
- 2 to 6 HP Scroll rated to 40° F SST - **NEW!**
- 1 to 4 HP Semi-Hermetic rated to 25° F SST
- 5-15 HP Discus rated to 40° F SST - **NEW!**
- 6.5 to 14 HP Scroll rated to 40° F SST
- 15 to 40 HP Discus (High Efficiency) rated to 40° F SST
- 30 to 80 HP Dual Compressor rated to +30° F SST

Water-Cooled Condensing Units

Hermetic and Scroll Water-Cooled 1/2 to 6 HP

- 1/2 to 5 HP Hermetic rated to 30° F SST
- 3 to 6 HP Scroll rated to 40° F SST

Semi-Hermetic and Discus Water-Cooled and Remote Compressor 1/2 to 6 HP

- 1 to 3 HP Reed rated to 25° F SST
- 5 HP Discus rated to 40° F SST

Packaged Systems

PRO³™ Top Mount

- Low Temp Hermetic rated for 0, -10, and 20°F Box Temp
(Medium and High temperature - coming soon)

PRO³™ Side Mount

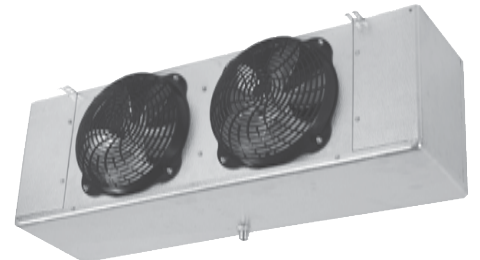
- Low Temp Hermetic rated for 0, -10, and 20°F Box Temp
- Med Temp Hermetic rated for 35°F Box Temp - electric defrost
- High Temp Hermetic rated for 35 and 38°F Box Temp - air defrost

Unit Coolers

Retrofitting components available through InterLink™

Commercial Refrigeration Parts

- Thermal Expansion Valve
- Nozzle
- Filter-Dryer



The name behind the brands you trust.™

